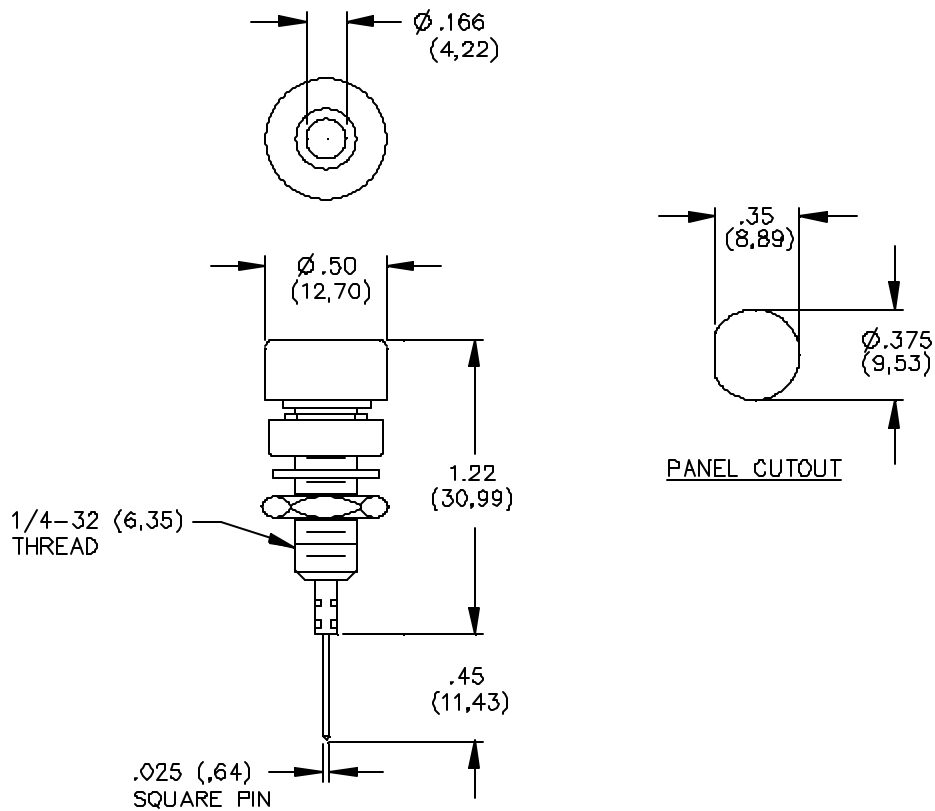


## Model 4005 Insulated Banana Jack With Wire Wrapped Terminal



### FEATURES:

- Mounts in panels from 1.60 (.063) to 9.53 (.375) thick.

### MATERIALS:

Banana Jack: Nickel Plated Brass  
Terminal: Gold Plated Phosphor Bronze  
Insulation: Polycarbonate  
Mounting Base: Polycarbonate  
Lockwasher: Steel  
Hex Nut: Brass

### RATINGS:

Voltage: Hand-held testing: 30VAC/60VDC Max.  
Hands free testing in controlled voltage environments: 2500 WVDC Max.  
Operating Temperature: +115°C (+239°F) Max.  
Current: 3 Amperes

### ORDERING INFORMATION: Model 4005-\*

\*=Color, -0 Black, -1 Brown, -2 Red, -3 Orange, -4 Yellow, -5 Green, -6 Blue, -7 Violet, -8 Gray, -9 White

Ordering Example: 4005-2 Color is Red  
Sold in packages of 10

All dimensions are in inches. Tolerances (except noted): .xx = ±.02" (.51 mm), .xxx = ±.005" (.127 mm).  
All specifications are to the latest revisions. Specifications are subject to change without notice.  
Registered trademarks are the property of their respective companies. Made in USA

6/9/99

SY/EH/LS

S:\Engineering\Release\DataSheets\FI\IkeDataSheet\4005\_1\_01.doc

Sales: 800-490-2361 Fax: 888-403-3360

Technical Assistance: 800-241-2060

PomonaACCESS 90222 (800) 444-6785 or (425) 446-6010  
More drawings available at [www.pomonaelectronics.com](http://www.pomonaelectronics.com)

Page 1 of 1